

The nature of work is evolving. Today's global and mobile workforce is best served with technologies that are adapted to the way we work.

# Moving Your Company To The Cloud

## WHAT YOU SHOULD KNOW WHEN MOVING TO THE CLOUD

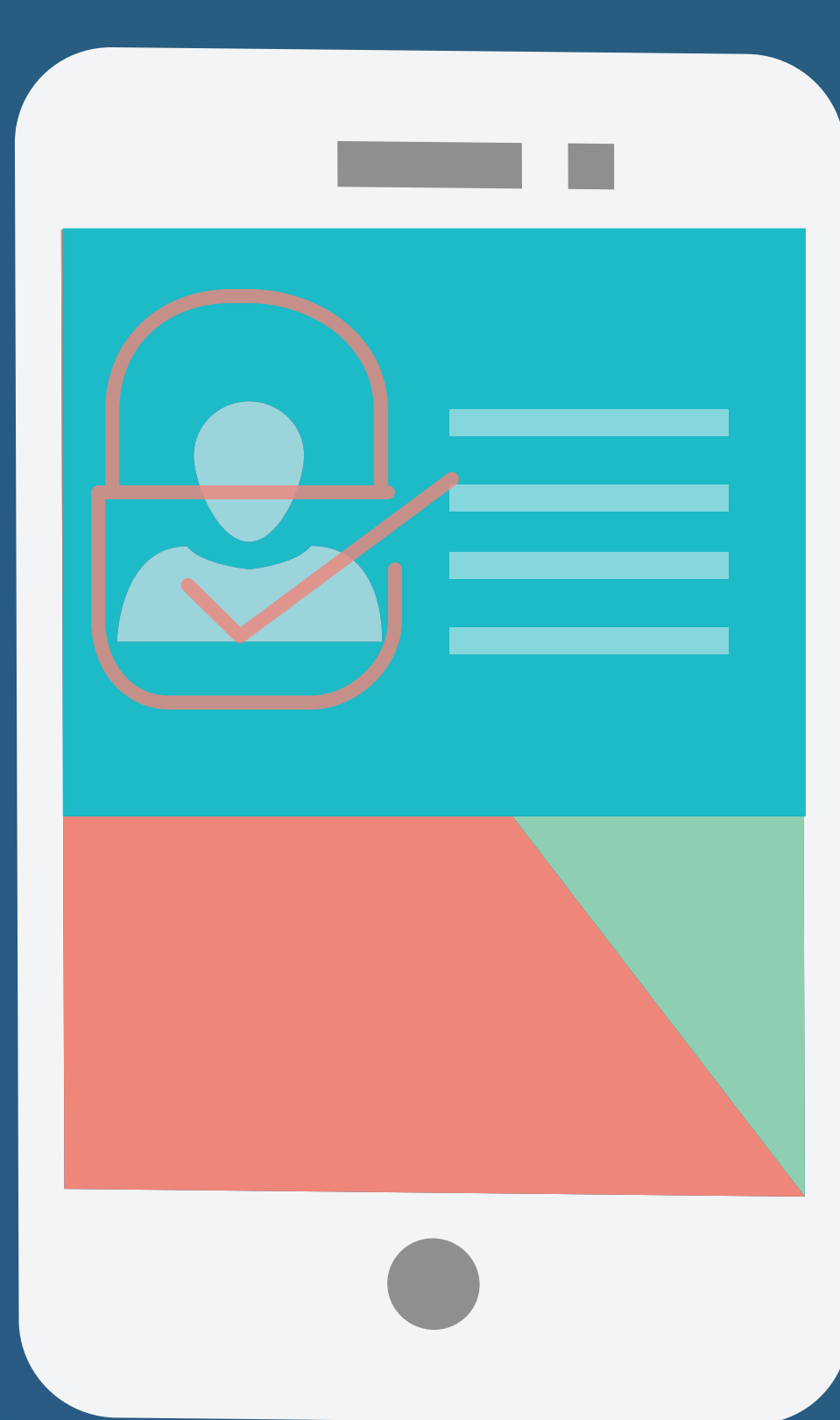


### GLOBAL MOBILE FLEXIBLE

Your workforce needs applications that ease the high cost and unnecessary burden a local installation carries, and considering the effects it can have on your company's flexibility, mobility, and global focus is essential to your business' health.



### 5 KEY FACTORS TO CONSIDER WHEN MOVING TO THE CLOUD



#### PRIVACY

Choosing cloud software vendors that are compliant with privacy laws is imperative, and will help you avoid pain in the future.



#### SECURITY

Any cloud solution you choose must have provable encryption, access controls, and processes to keep your business data safe.



#### LEGAL RISKS

Always review the terms and conditions and agreements carefully to make sure you won't get caught out if the worst were to happen.



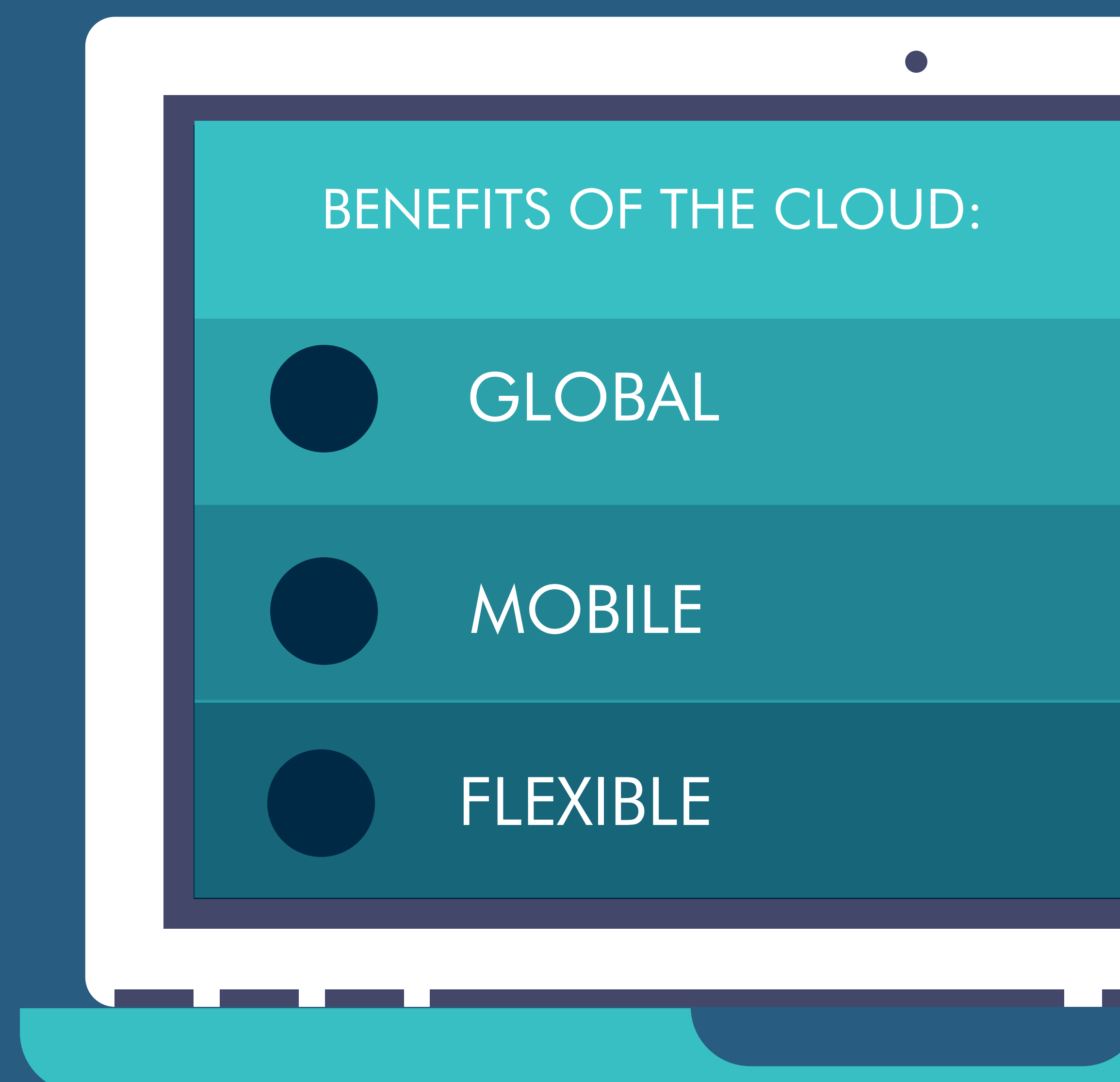
#### VALUE

You need to be confident that you're getting value for the the money you're paying by moving to the cloud.



#### INTEGRATION

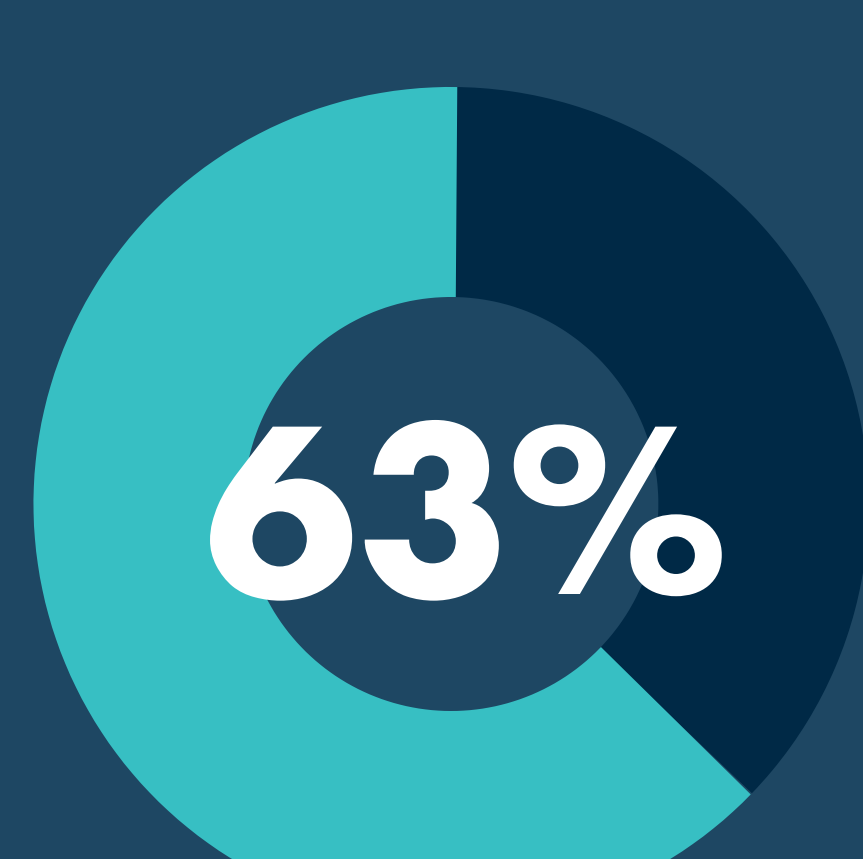
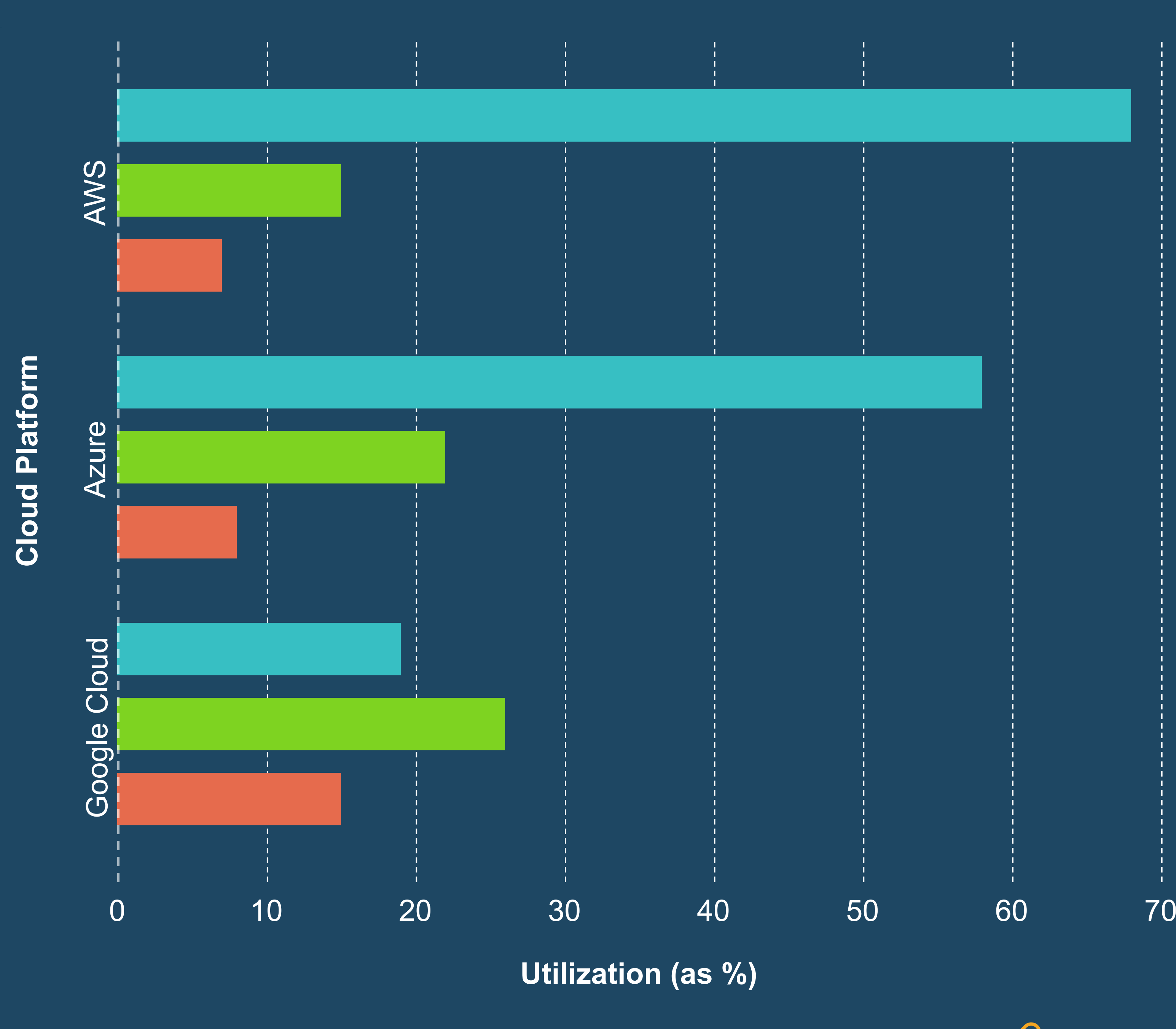
Your business doesn't operate on just one software system. Make sure any cloud solution will integrate well with your other key applications.



### ENTERPRISE CLOUD ADOPTION BY THE NUMBERS

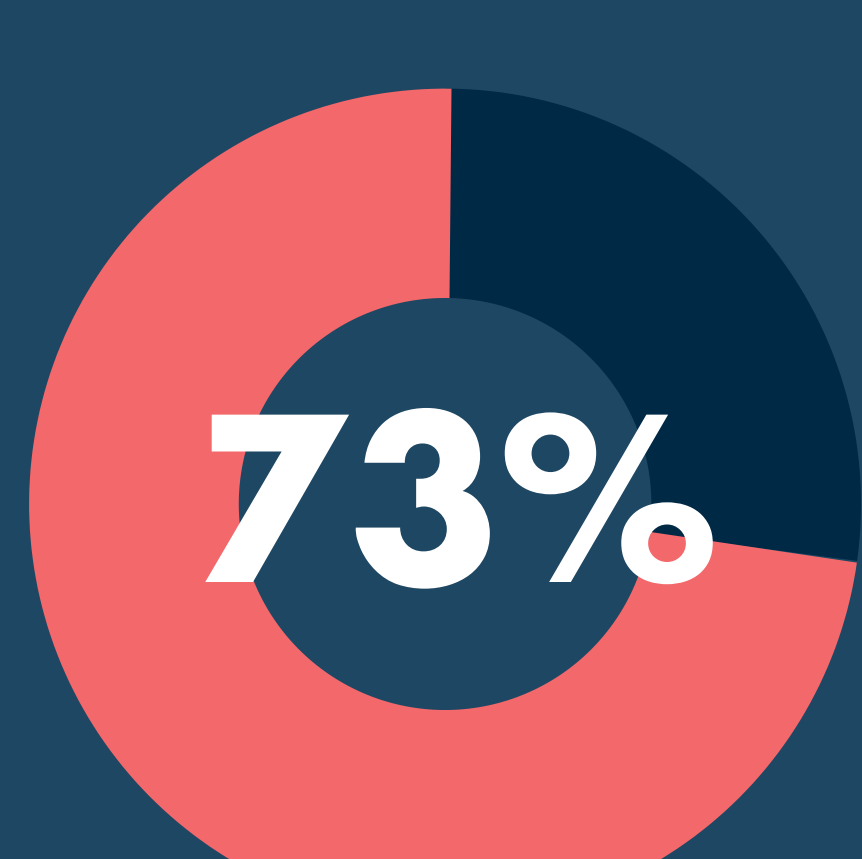
The top 3 cloud platforms adopted at the enterprise level are Amazon Web Services, Microsoft Azure & Google Cloud Services. Knowing the current industry trends will help in identifying which cloud platform will work best for your company.

## Enterprise Public Cloud Adoption



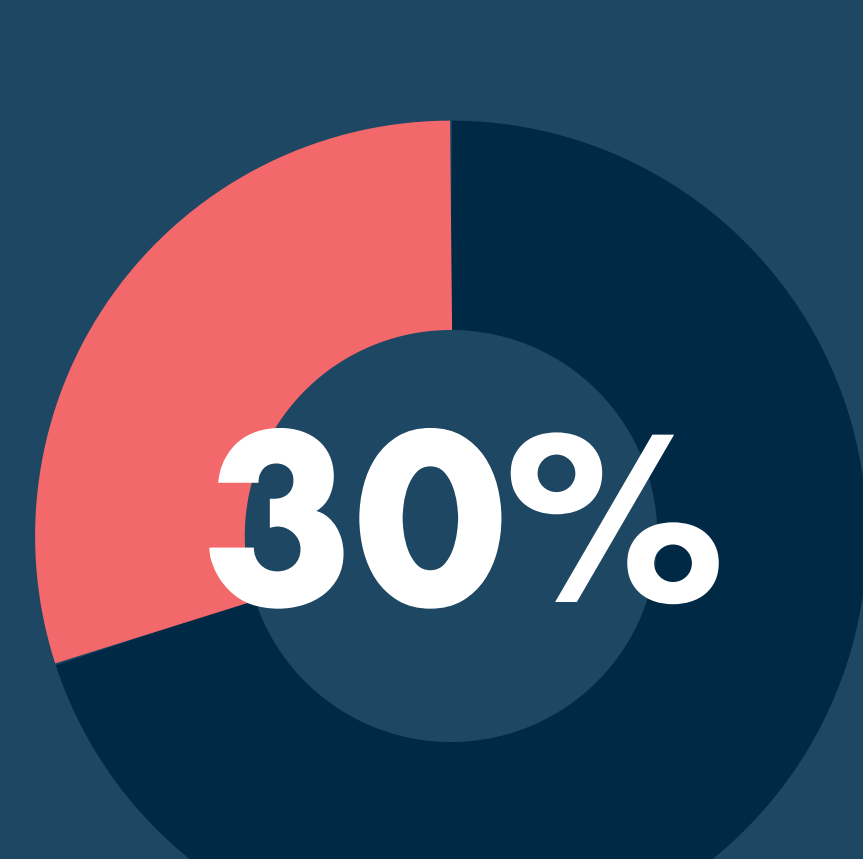
### Cloud Users in 2017

63% of Enterprise Workloads on Cloud. Includes Private, Public & Hybrid Set-Ups



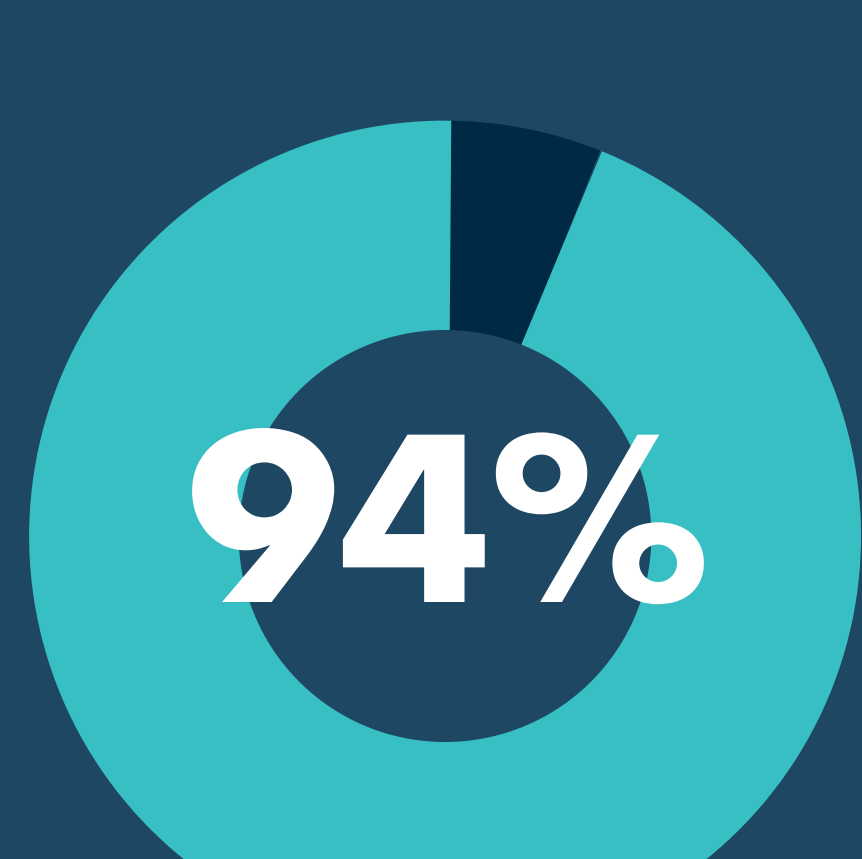
### Cloud Users in 2020

73% of Enterprise Workloads are forecast to be on Cloud



### IT Budget Allocated

30% of IT Budgets are allocated to cloud computing



### Use A Cloud Service

94% of enterprises already use a cloud service

#### Sources

Links to original sources of data color corresponding:

<https://www.datamation.com/cloud-computing/aws-vs-azure-vs-google-cloud-comparison.html>

[https://www.logicmonitor.com/resource/the-future-of-the-cloud-a-cloud-influencers-survey/?utm\\_medium=pr&utm\\_source=businesswire&utm\\_campaign=cloudsurvey](https://www.logicmonitor.com/resource/the-future-of-the-cloud-a-cloud-influencers-survey/?utm_medium=pr&utm_source=businesswire&utm_campaign=cloudsurvey)

<https://hostingtribunal.com/blog/cloud-adoption-statistics/>



FOR MORE INFORMATION  
VISIT [WWW.JOURNYX.COM](http://WWW.JOURNYX.COM)