



## SHOP FLOOR DATA COLLECTION

### Simple Time and Job Tracking for Complex Businesses



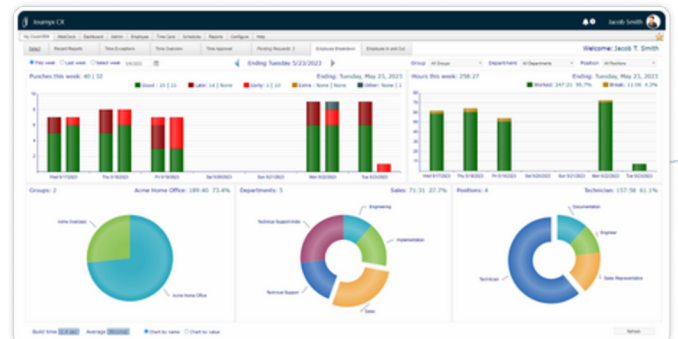
By utilizing the core Journyx time and attendance solution alongside Journyx professional services, we can customize the solution to meet your clients' specific manufacturing time collection needs.

### Easy Employee Time, Attendance, and Job Tracking for Shop Floor Data Collection



**Journyx time and attendance** (Journyx CX) includes state-of-the-art physical time clocks paired with sophisticated time tracking and scheduling software to meet your clients' shop floor data collection needs.

- **Tracking time beyond in/out and start/stop**
  - Tracking jobs/work orders that run simultaneously
  - Tracking jobs and employees in cells
  - Tracking crews
  - Tracking jobs in batch processes
- **Tracking quantities on jobs/work orders**
  - Quantity completed
  - Quantity over
  - Quantity scrap
  - Quantity rework



- **Making clocking against jobs/work orders more efficient and accurate**
  - Cell and/or crew tracking
  - Facial recognition
  - Barcode scanning
  - Using, auditing, or creating time standards